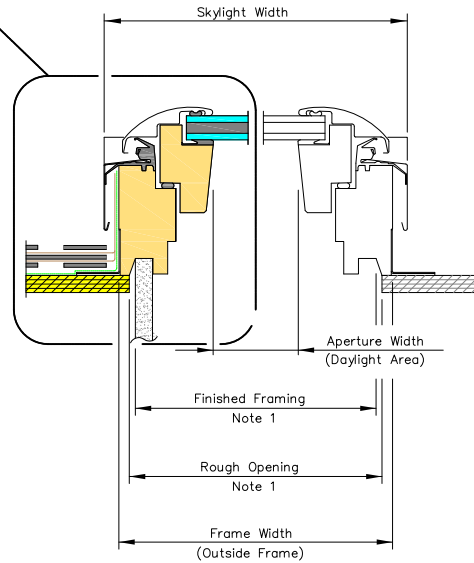
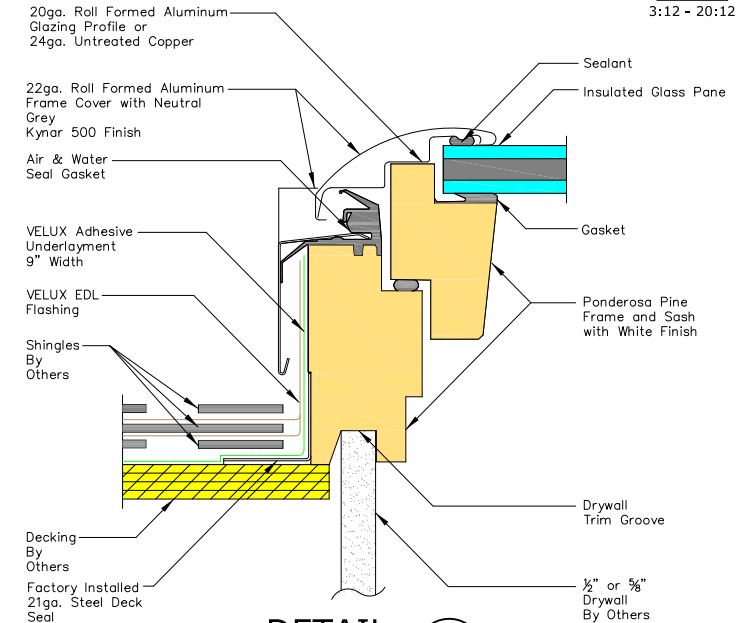


VERTICAL CROSS SECTION

SEE DETAIL 1



HORIZONTAL CROSS SECTION



DETAIL 1

STANDARD GLAZING OPTIONS:

- Laminated LowE3 (04)

COMPATIBLE FLASHINGS:

- EDL Step flashing
- EKL/EKX Combi flashing
- EDW Tile flashing
- EKW/EKX Combi tile flashing
- EDM Metal roof flashing
- ECB Counter flashing for curbs

ELECTRICAL/CONTROL DATA:

- VSS Skylight controlled via 2.4 GHz radio frequency KLR 200 remote control provided with skylight. Optional controls for VSS Skylight are KLI 110 Wall Mounted Keypad or KLF 100 Home Automation Integration Kit.
- Solar Operator, Powered by Battery Pack with 24VDC output, Battery Pack is a 9 Cell MiMH 10.8V, 2100MAH.

PRODUCT DIMENSIONS									
METRIC UNITS (MILLIMETERS)									
Size	Rough Opening Width	Frame Width	Frame Aperture Width	Skylight Width	Rough Opening Height	Frame Height	Frame Aperture Height	Skylight Height	Daylight Area (Sq. Meters)
C01	533	546	407	566.7	682	695	519	720	.21
C04	533	546	407	566.7	962	975	799	1000	.33
C06	533	546	407	566.7	1162	1175	999	1200	.41
C08	533	546	407	566.7	1382	1395	1219	1420	.50
M04	763	776	637	796.7	962	975	799	1000	.51
M06	763	776	637	796.7	1162	1175	999	1200	.64
M08	763	776	637	796.7	1382	1395	1219	1420	.78
S01	1123	1136	997	1156.7	682	695	519	720	.52
S06	1123	1136	997	1156.7	1162	1175	999	1200	1.0

NOTES:

1. The ROUGH OPENING and FINISHED FRAMING dimensions are based on perpendicular interior finish material on all four sides and these dimensions will vary depending on the roof construction, the thickness and the design of the interior finish material.
2. Max sash opening is 279.4mm by stainless steel chain.
3. Standard Panel Width dimension includes Solar Panel bracket and bracket end caps.

This drawing is an instrument of service and is provided for informational use only.